

## CELLULAR FOAMS

# Everad® Green TAC 3005 A + 2016 B

## The chlorine-free water-based contact adhesive

### The water-based contact adhesives technology

Everad® has been a pioneer of water-based contact technology. We have developed a wide range of products and processes to address your highest requirements:

- Everad® TAC 1C: one-component adhesive
- Everad® TAC 2C: two-component adhesive.

These adhesives are formulated with polychloroprene polymer that allows:

- Immediate gluing with no waiting time
- Very fast bonding.

### Developments to meet regulations and environment protection

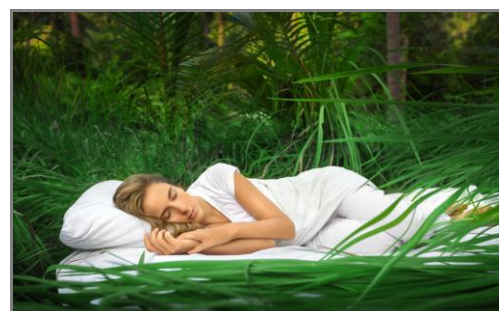
We have been asked, for very specific applications (baby mattresses in particular), for a complete lack of chlorine. We thus developed a water-based contact adhesive as an alternative bonding solution to eliminate chlorine, in accordance with criterias of Nordic Ecolabelling for furniture and fitments.

### Everad® Green TAC 3005 A + 2016 B

Everad® Green TAC 3005 A + 2016 B is a chlorine-free water-based contact adhesive solution. It is a major innovation in the area of adhesives for foam, with specific benefits on foam to wood bonding.

### Everad® Green TAC 3005 A + 2016 B benefits

- Chlorine-free
- Solvent-free
- Phthalate-free
- APEO-free
- No labelling
- Very high green strength
- Long open time
- Very fast setting and fast drying
- Very high UV resistance
- Very soft bonding line
- All kinds of applications



CONTACT -> [contact@everad-adhesives.com](mailto:contact@everad-adhesives.com)

We look forward to providing you with more information about our latest innovations.

## CELLULAR FOAMS

# Everad® Green TAC 3005 A + 2016 B

## The chlorine-free water-based contact adhesive

### Application Process

This is a two-component system that can be applied in several ways:

- Everad® TAC Easy Duo Box 2K gravity
- Everad® TAC Easy SP1-B25-2 using pressurized tanks
- Everad® TAC Easy Pump 2K System using diaphragm pumps

### Product

Everad® Green TAC 3005 A + 2016 B  
 2C water-based contact adhesive without chlorine

